

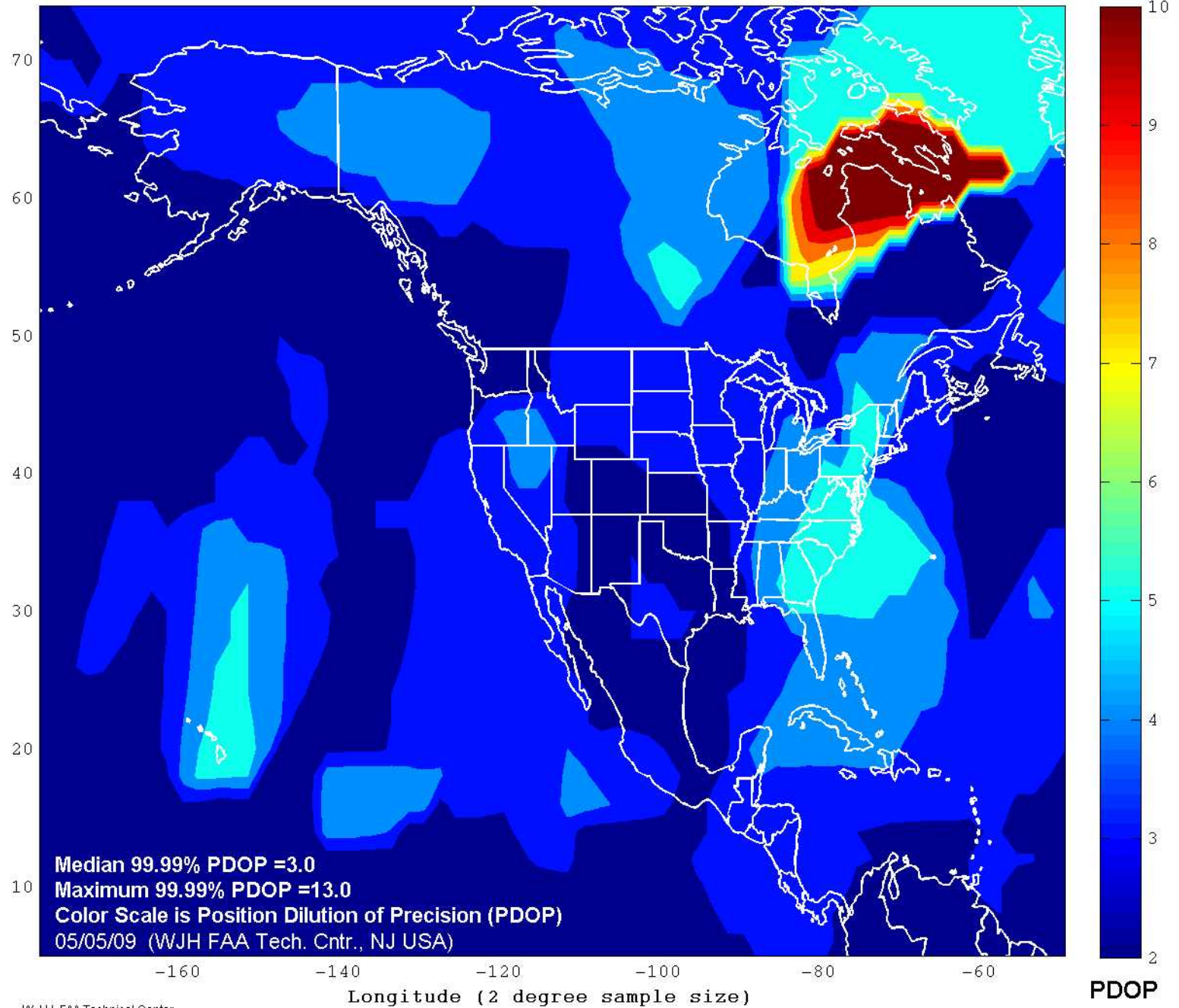
Civil Report Card On GPS Performance April 2009

Operational Performance Parameter	CY 2008	Mar 2009	Apr 2009	Long term	Short term
Availability Parameters					
<i>Average Number of satellites usable</i>	30.48	30.98	30.98	↑	→
<i>Average number of satellites usable in primary slots</i>	23.95 (99.80%)	23.98 (99.93%)	23.98 (99.92%)	↑	→
<i>Average availability of 6 satellites in view</i>	99.99%	100%	99.99%	→	↓
99.99% Horizontal DOP					
<i>Area Median</i>	1.8	1.4	1.5	↑	↓
<i>Worst Site</i>	5.8	4.7	4.9	↑	↓
99.99% Vertical DOP					
<i>Area Median</i>	3.3	2.5	2.7	↑	↓
<i>Worst Site</i>	17.6	12.0	12.1	↑	↓
99.99% Position DOP (PDOP)					
<i>Area Median</i>	3.6	2.9	3.0	↑	↓
<i>Worst Site</i>	18.3	12.8	13.0	↑	↓
Accuracy Parameters					
RMS Single Frequency User Range Error					
<i>Constellation Median</i>	1.72	1.83	1.86	↓	↓
<i>Worst Satellite</i>	2.14	2.33	2.34	↓	→
95% Horizontal Error					
<i>Area Median</i>	2.36	2.15	2.20	↑	↓
<i>Worst Site</i>	3.35	3.48	3.79	↓	↓
<i>Availability (% <4.5m (historical 3-sigma))</i>	99.77%	99.91%	99.89%	↑	↓
95% Vertical Error					
<i>Area Median</i>	4.46	4.66	5.02	↓	↓
<i>Worst Site</i>	4.95	5.22	5.96	↓	↓
<i>Availability (% < 9m (historical 3-sigma))</i>	99.94%	99.96%	99.98%	↑	↑

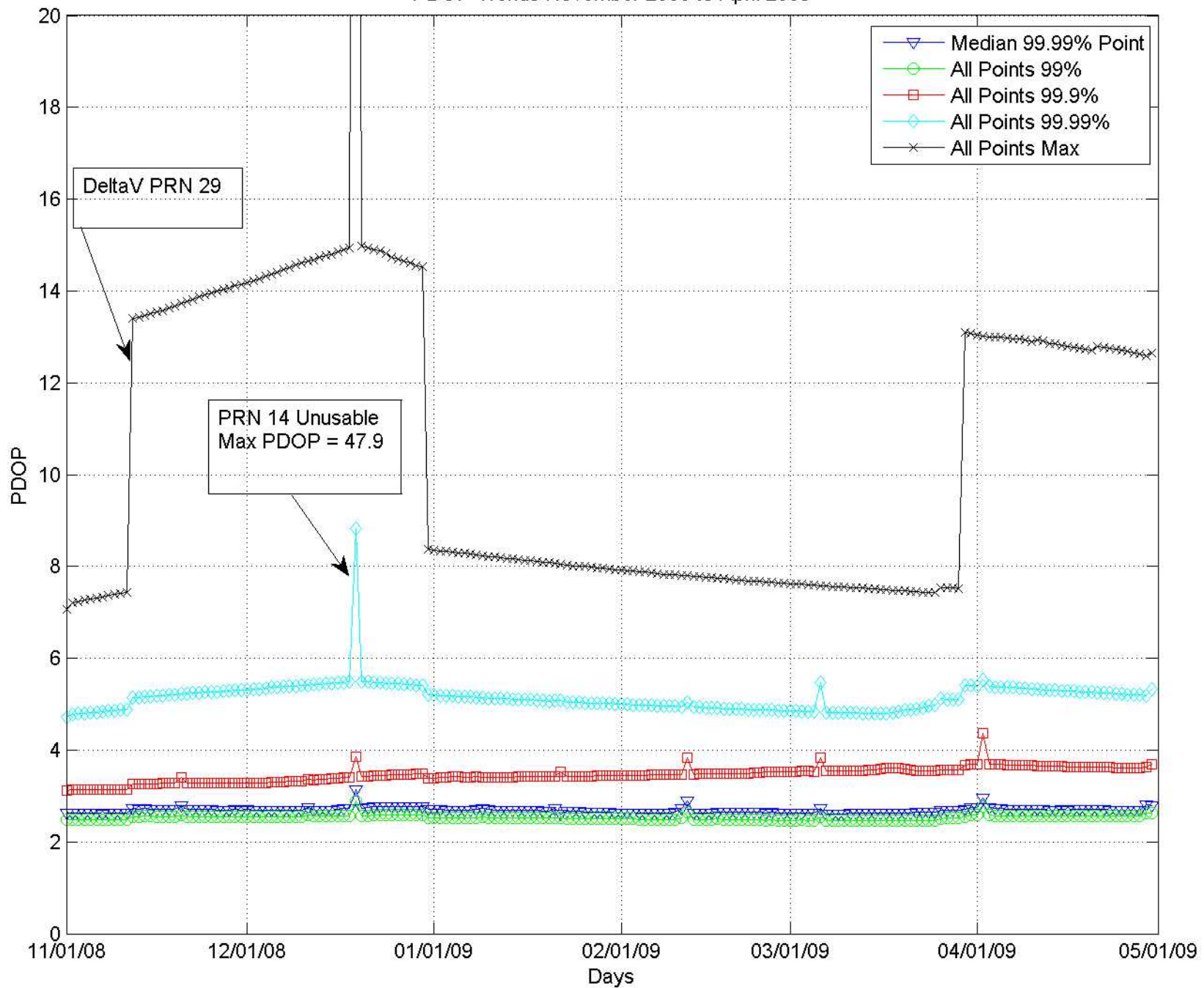
Key: ↑ improving ↓ worsening → no significant change

Long Term is current month vs. prior 24 months; Short Term is current month vs. prior month

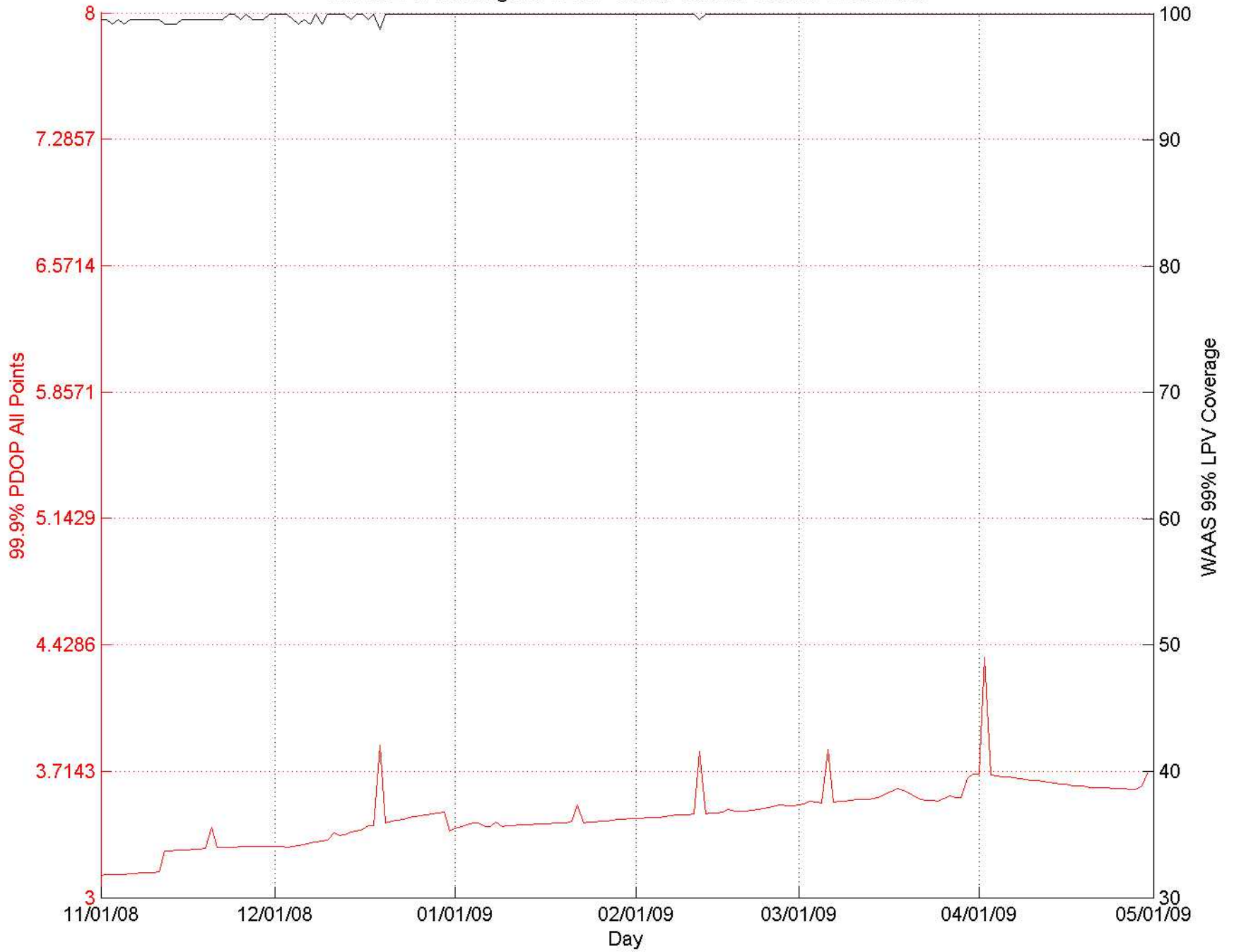
North America GPS PDOP 99.99% Index April 2009



PDOP Trends November 2008 to April 2009



WAAS LPV Coverage vs PDOP Trends October 2008 to March 2009



Six Satellite Availability Trends November 2008 to April 2009

