

Civil Report Card On GPS Performance

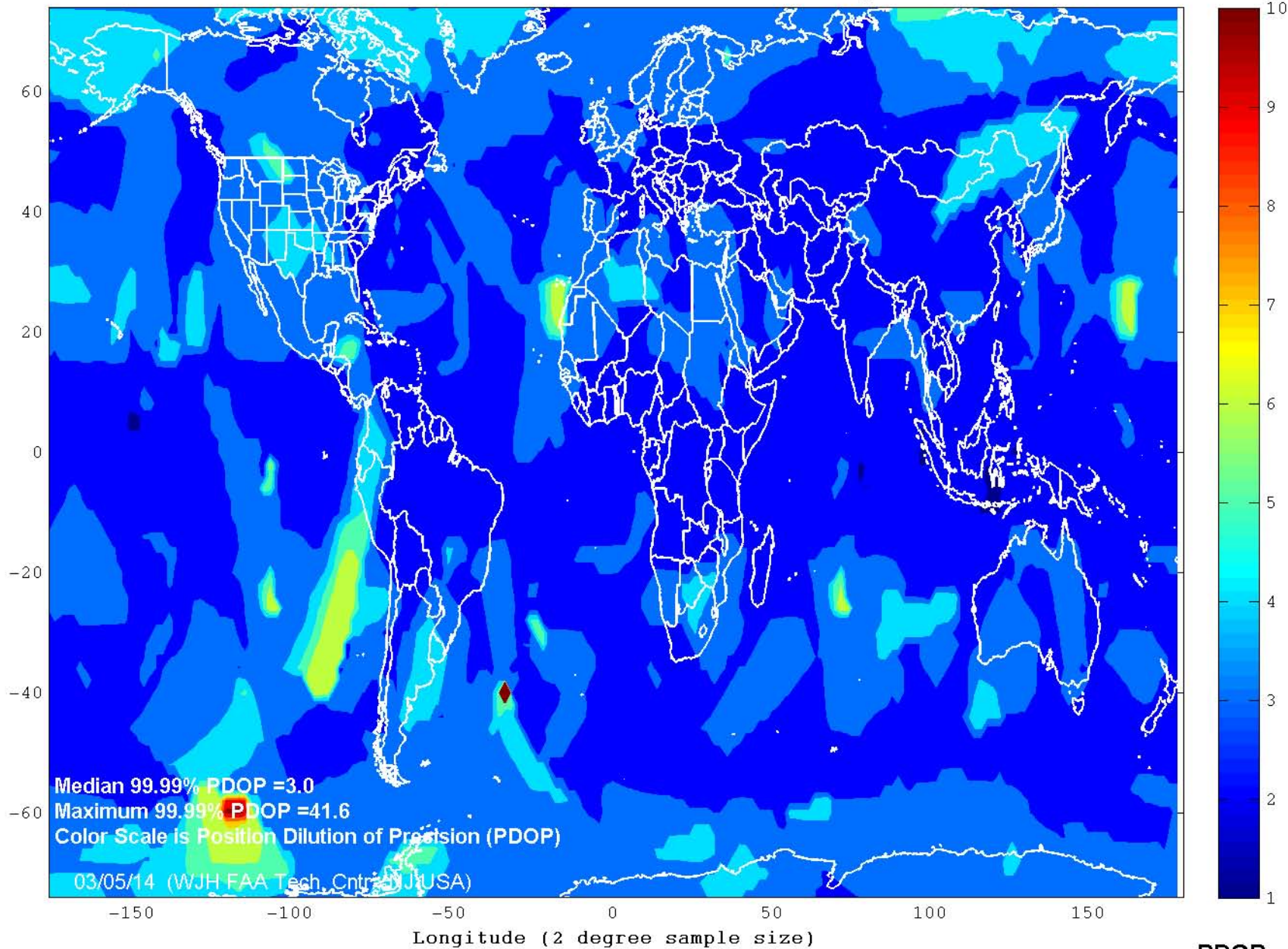
February 2014

Operational Performance Parameter	CY 2013	Jan 2014	Feb 2014	Long term	Short term
Availability Parameters					
<i>Average Number of satellites usable</i>	30.97	30.98	30.71	↓	↓
<i>Average number of satellites usable in primary slots</i>	23.98 (99.94%)	23.98 (99.94%)	23.98 (99.90%)	↓	↓
<i>Average availability of 6 satellites in view</i>	99.99%	99.99%	99.99%	→	→
99.99% Horizontal DOP					
<i>Area Median</i>	1.4	1.4	1.5	↓	↓
<i>Worst Site</i>	35.6	2.5	18.1	↑	↓
99.99% Vertical DOP					
<i>Area Median</i>	2.4	2.4	2.7	↓	↓
<i>Worst Site</i>	71.9	5.0	37.5	↑	↓
99.99% Position DOP (PDOP)					
<i>Area Median</i>	2.8	2.7	3.0	↓	↓
<i>Worst Site</i>	80.3	5.2	41.6	↑	↓
100% RAIM Availability (HAL=185m)					
<i>NPA Service Area (NSA)</i>	73.24%	26.11%	23.79%	↓	↓
<i>World</i>	65.97%	50.79%	33.10%	↓	↓
Accuracy Parameters					
RMS Single Frequency User Range Error					
<i>Constellation Median</i>	2.06	2.42	2.35	↓	↑
<i>Worst Satellite</i>	4.37	3.70	3.34	↑	↑
95% Horizontal Error					
<i>Area Median</i>	2.78	2.74	3.34	↓	↓
<i>Worst Site</i>	8.07	7.34	9.49	↓	↓
<i>Availability (% <4.5m (historical 3-sigma))</i>	98.68%	98.43%	96.53%	↓	↓
95% Vertical Error					
<i>Area Median</i>	5.23	7.75	5.57	↓	↑
<i>Worst Site</i>	9.25	9.09	9.21	↑	↓
<i>Availability (% < 9m (historical 3-sigma))</i>	99.37%	97.11%	99.38%	↑	↑

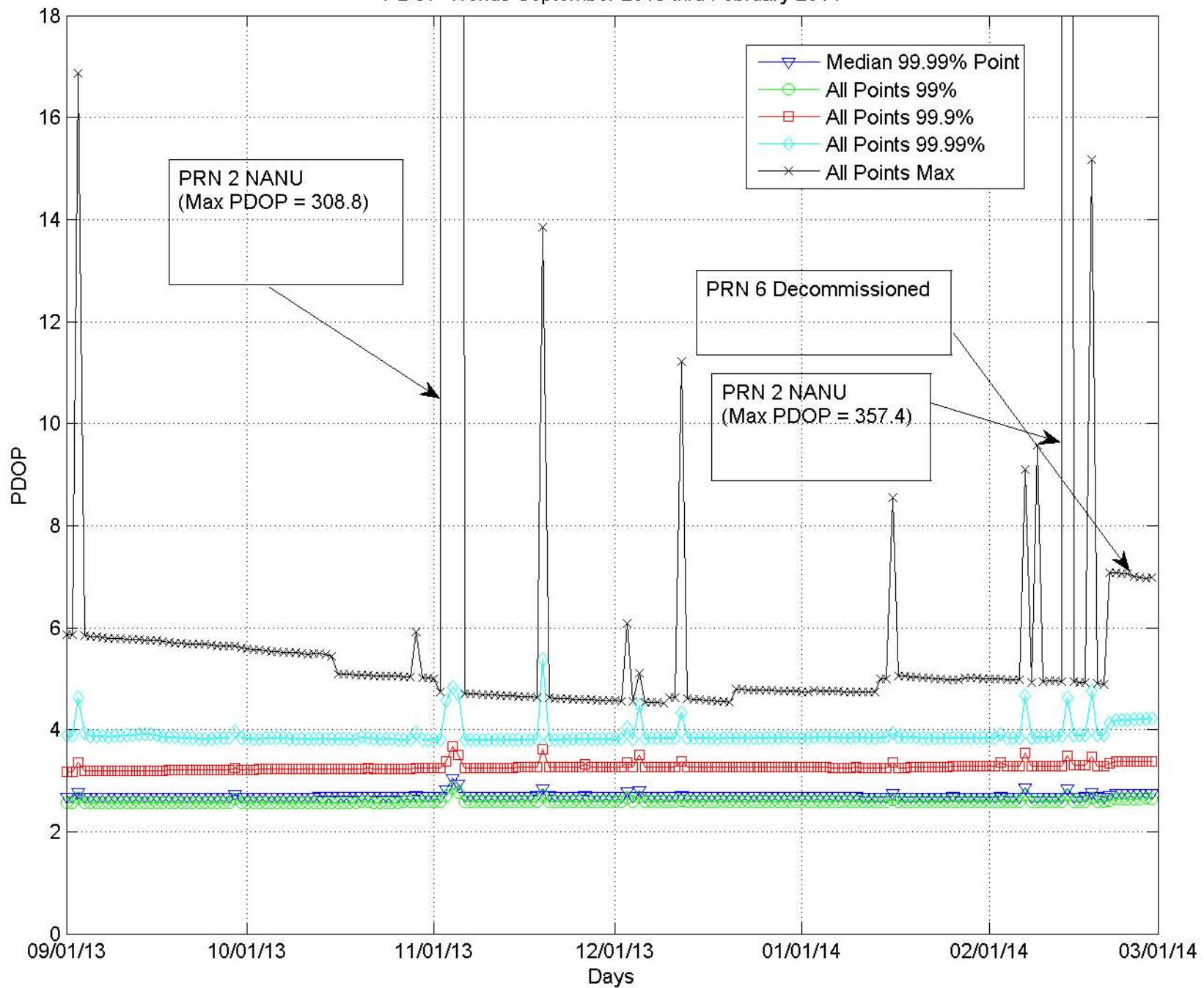
Key: ↑ improving ↓ worsening → no significant change

Long Term is current month vs. prior 24 months; Short Term is current month vs. prior month

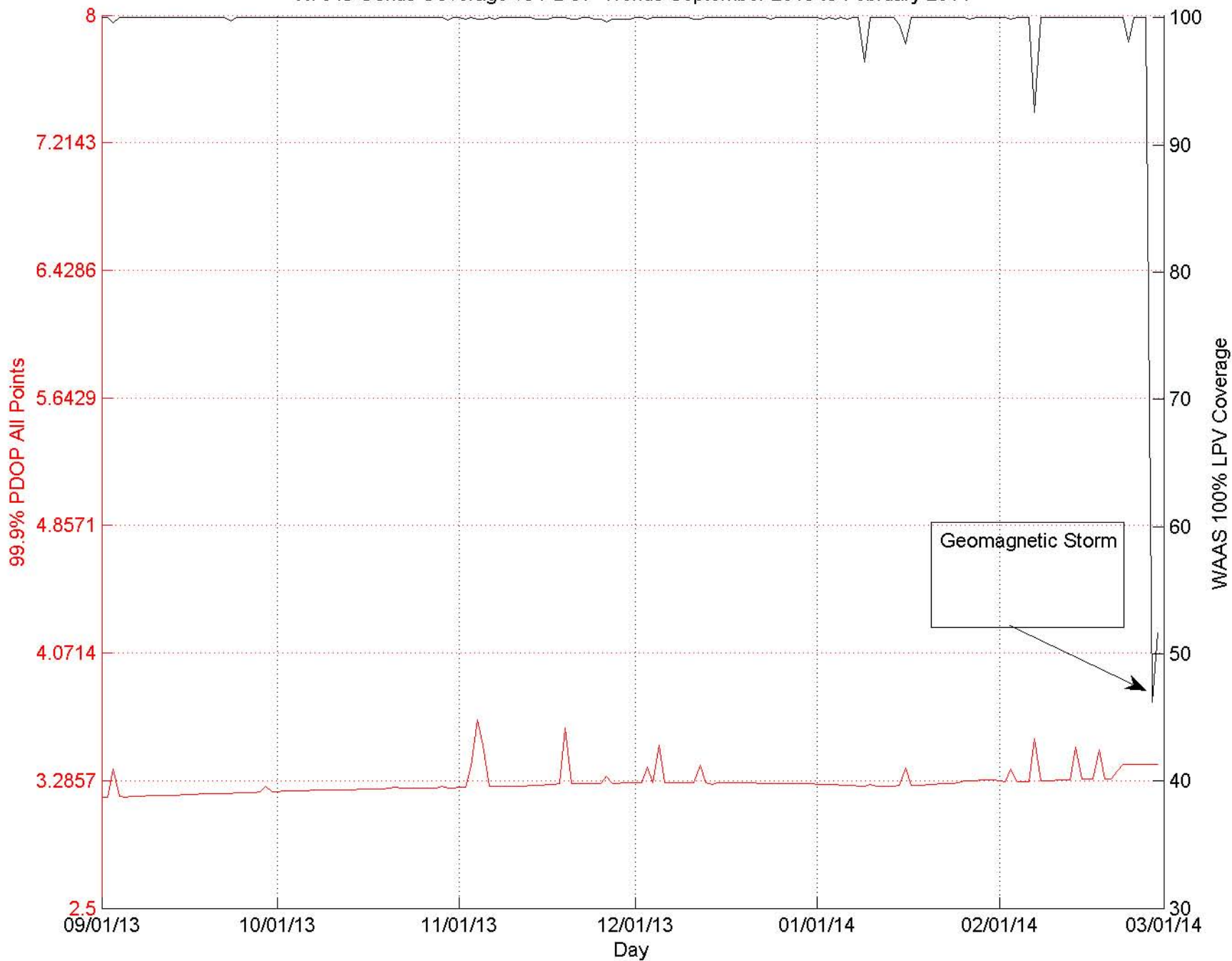
GPS World PDOP 99.99% Index February 2014



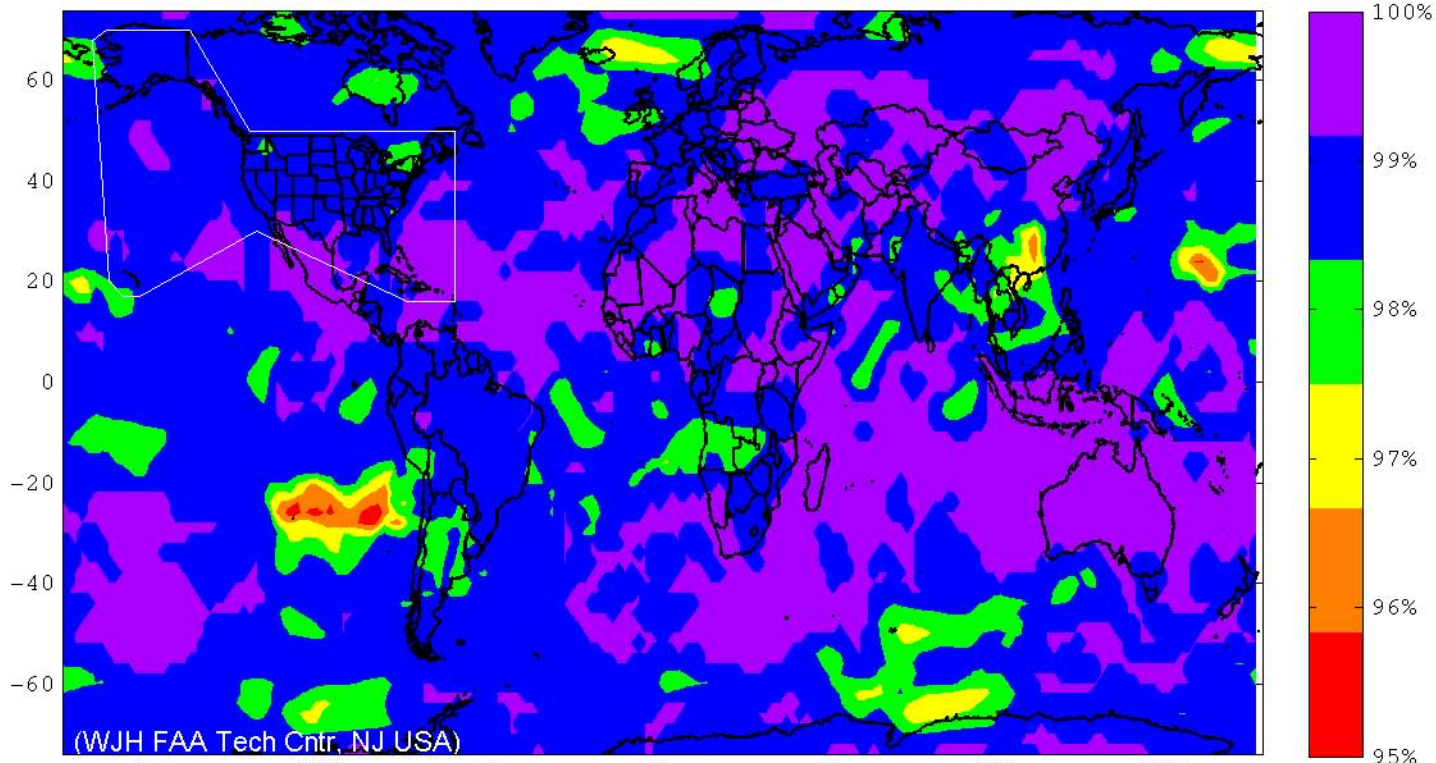
PDOP Trends September 2013 thru February 2014



WAAS Conus Coverage vs PDOP Trends September 2013 to February 2014



SPS RAIM RNP 0.1 (HAL = 185m) Availability
 FD Only, SA Off, without Baro-Aiding
 February 1 - February 28, 2014

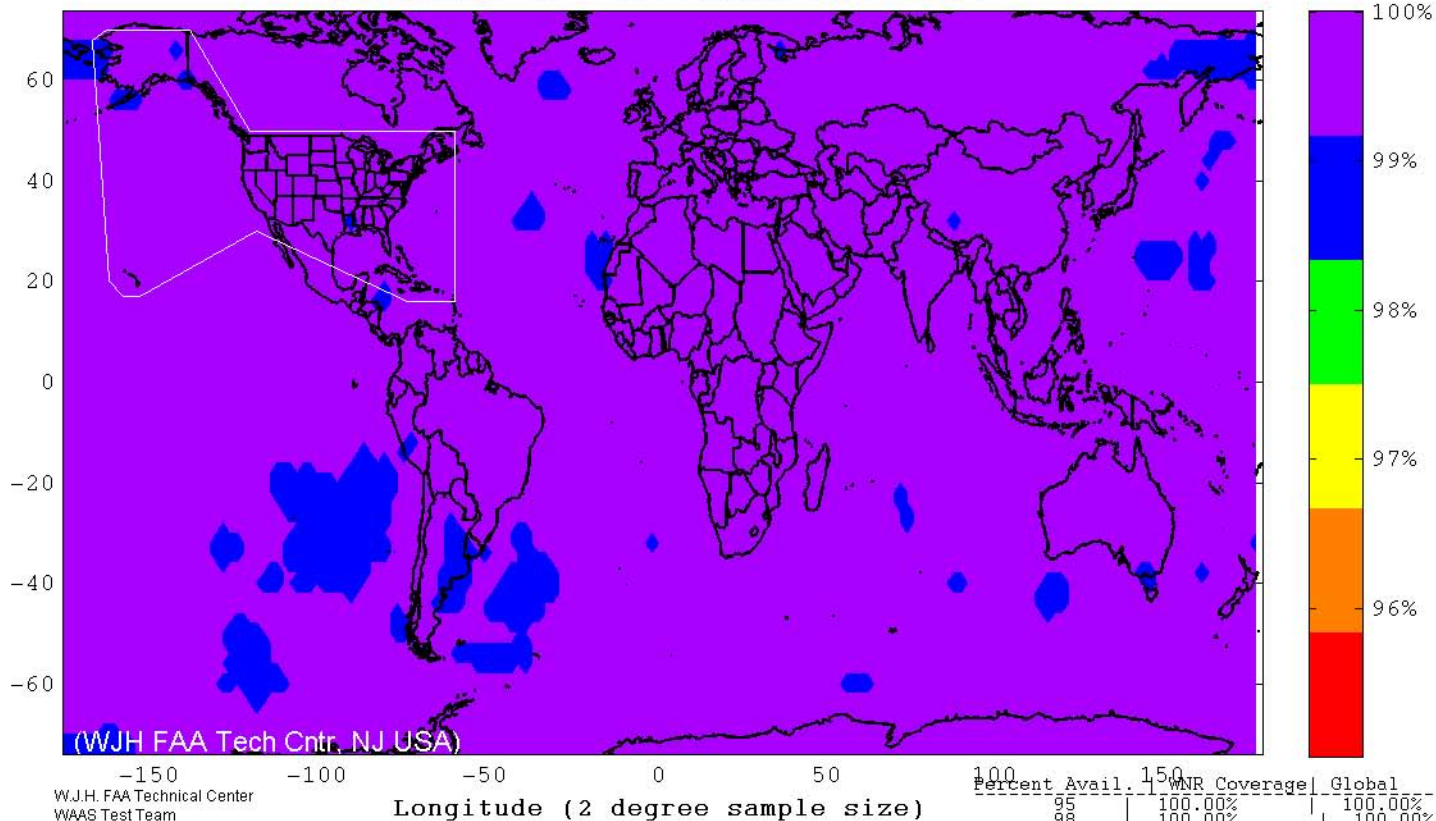


W.J.H. FAA Technical Center
 WAAS Test Team
 03/05/14

Longitude (2 degree sample size)

Percent Avail.	WNR Coverage	Global
95	100.00%	100.00%
98	100.00%	98.30%
99	97.26%	89.92%
100	23.79%	33.10%

SPS RAIM RNP 0.3 (HAL = 556m) Availability
 FD Only, SA Off, without Baro-Aiding
 February 1 - February 28, 2014



W.J.H. FAA Technical Center
 WAAS Test Team
 03/05/14

Longitude (2 degree sample size)