

# Civil Report Card On GPS Performance

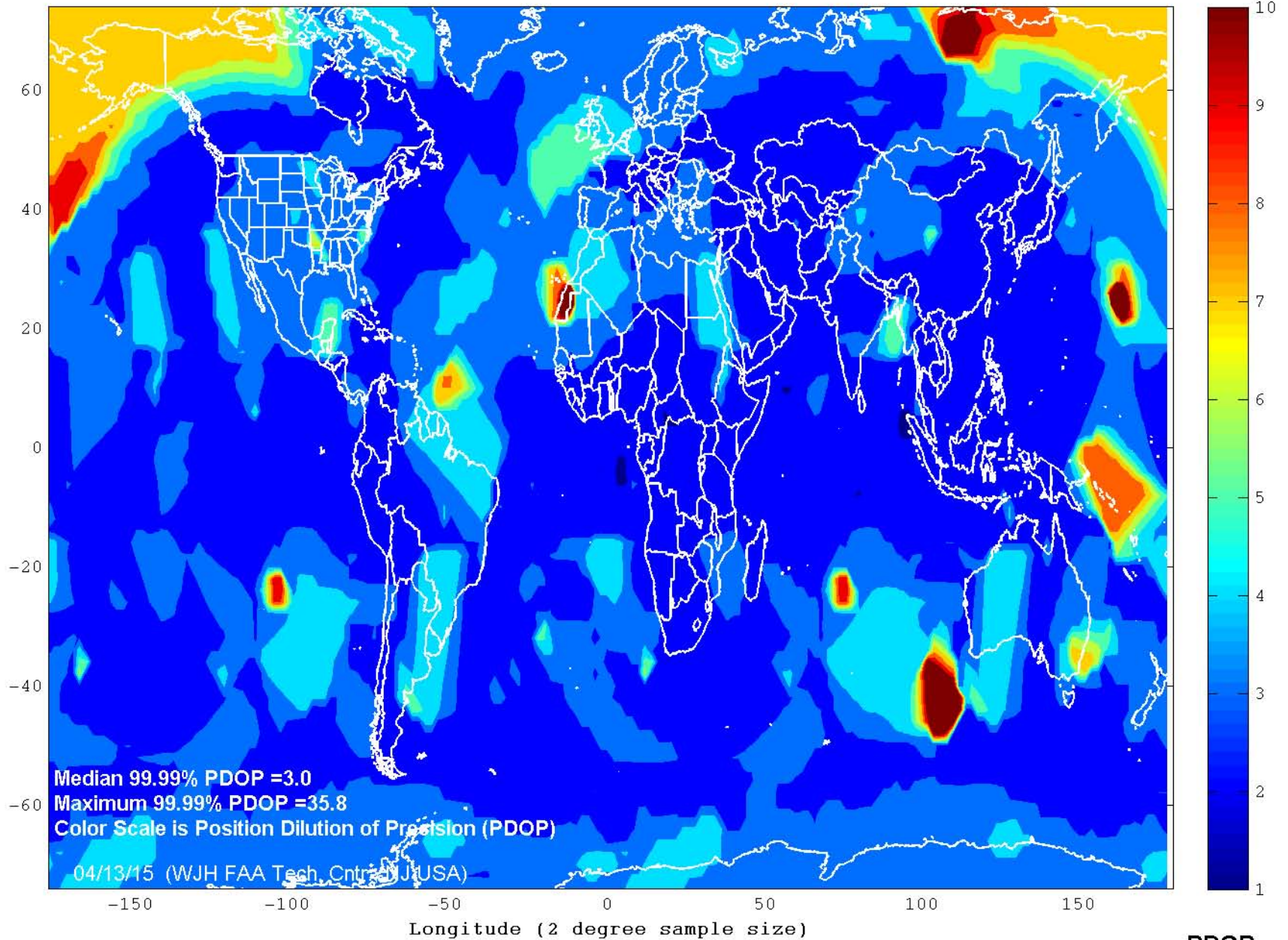
## March 2015

Operational Performance Parameter	CY 2014	Feb 2015	Mar 2015	Long term	Short term
<b>Availability Parameters</b>					
<i>Average Number of satellites usable</i>	30.40	29.94	29.91	↓	↓
<i>Average number of satellites usable in primary slots</i>	23.98 (99.94%)	24.00 (100%)	23.98 (99.93%)	→	↓
<i>Average availability of 6 satellites in view</i>	99.99%	99.99%	99.99%	→	→
<b>99.99% Horizontal DOP</b>					
<i>Area Median</i>	1.4	1.4	1.5	↓	↓
<i>Worst Site</i>	18.1	2.5	9.4	↑	↓
<b>99.99% Vertical DOP</b>					
<i>Area Median</i>	2.5	2.5	2.7	↓	↓
<i>Worst Site</i>	43.0	9.0	34.5	↑	↓
<b>99.99% Position DOP (PDOP)</b>					
<i>Area Median</i>	2.8	2.8	3.0	↓	↓
<i>Worst Site</i>	43.4	9.2	35.7	↑	↓
<b>100% RAIM Availability (HAL=185m)</b>					
<i>NPA Service Area (NSA)</i>	43.96%	45.79%	7.16%	↓	↓
<i>World</i>	47.30%	49.81%	21.32%	↓	↓
<b>Accuracy Parameters</b>					
<b>RMS Single Frequency User Range Error</b>					
<i>Constellation Median</i>	2.25	2.05	2.13	↑	↓
<i>Worst Satellite</i>	2.69	2.95	2.62	↑	↑
<b>95% Horizontal Error</b>					
<i>Area Median</i>	2.62	2.97	3.26	↓	↓
<i>Worst Site</i>	10.23	9.46	9.92	↑	↓
<i>Availability (% &lt;4.5m (historical 3-sigma))</i>	97.72%	97.47%	97.27%	↓	↓
<b>95% Vertical Error</b>					
<i>Area Median</i>	5.52	4.80	4.86	↑	↓
<i>Worst Site</i>	9.87	8.88	9.25	↑	↓
<i>Availability (% &lt; 9m (historical 3-sigma))</i>	98.90%	99.51%	99.64%	↑	↑

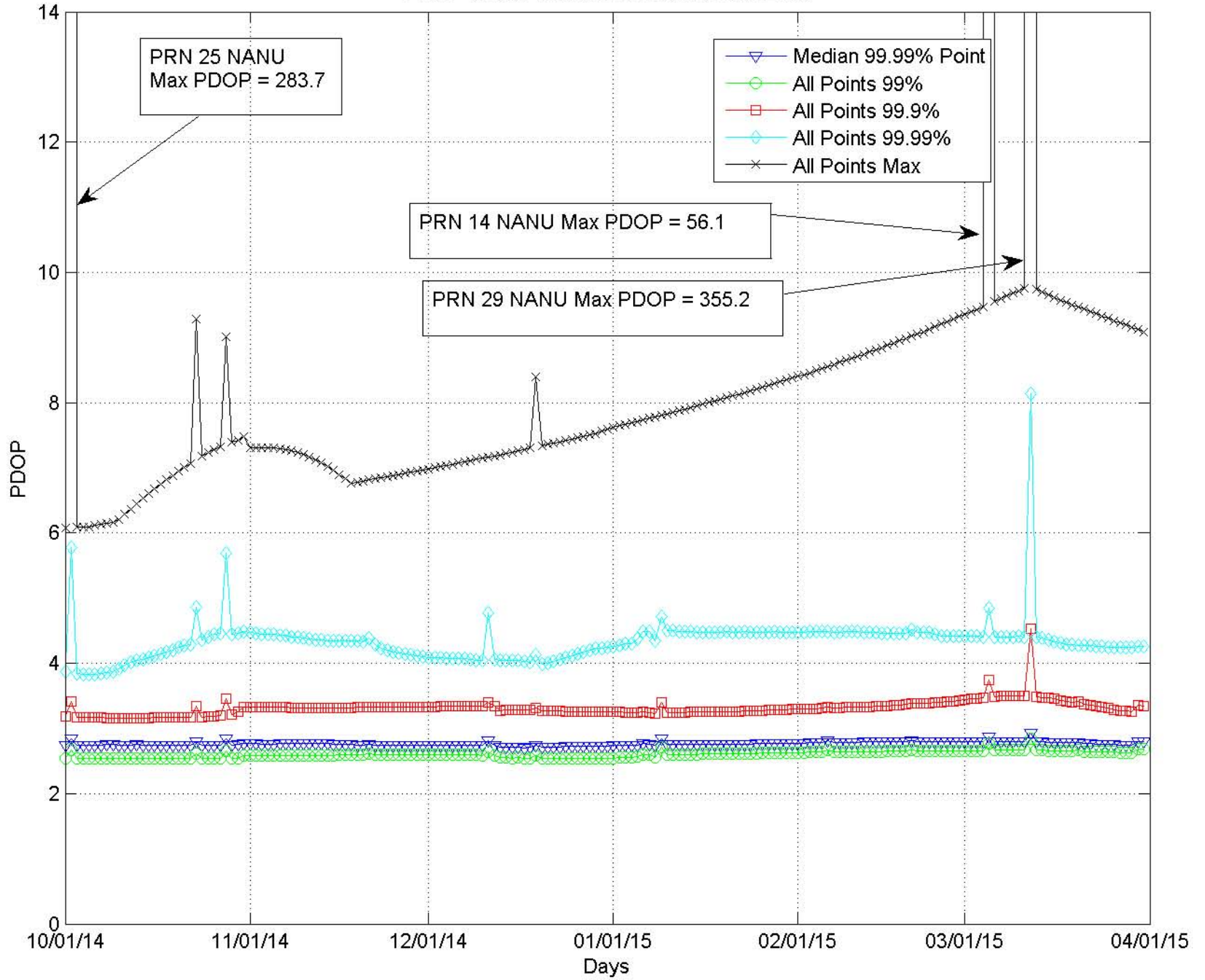
Key: ↑ improving ↓ worsening → no significant change

Long Term is current month vs. prior 24 months; Short Term is current month vs. prior month

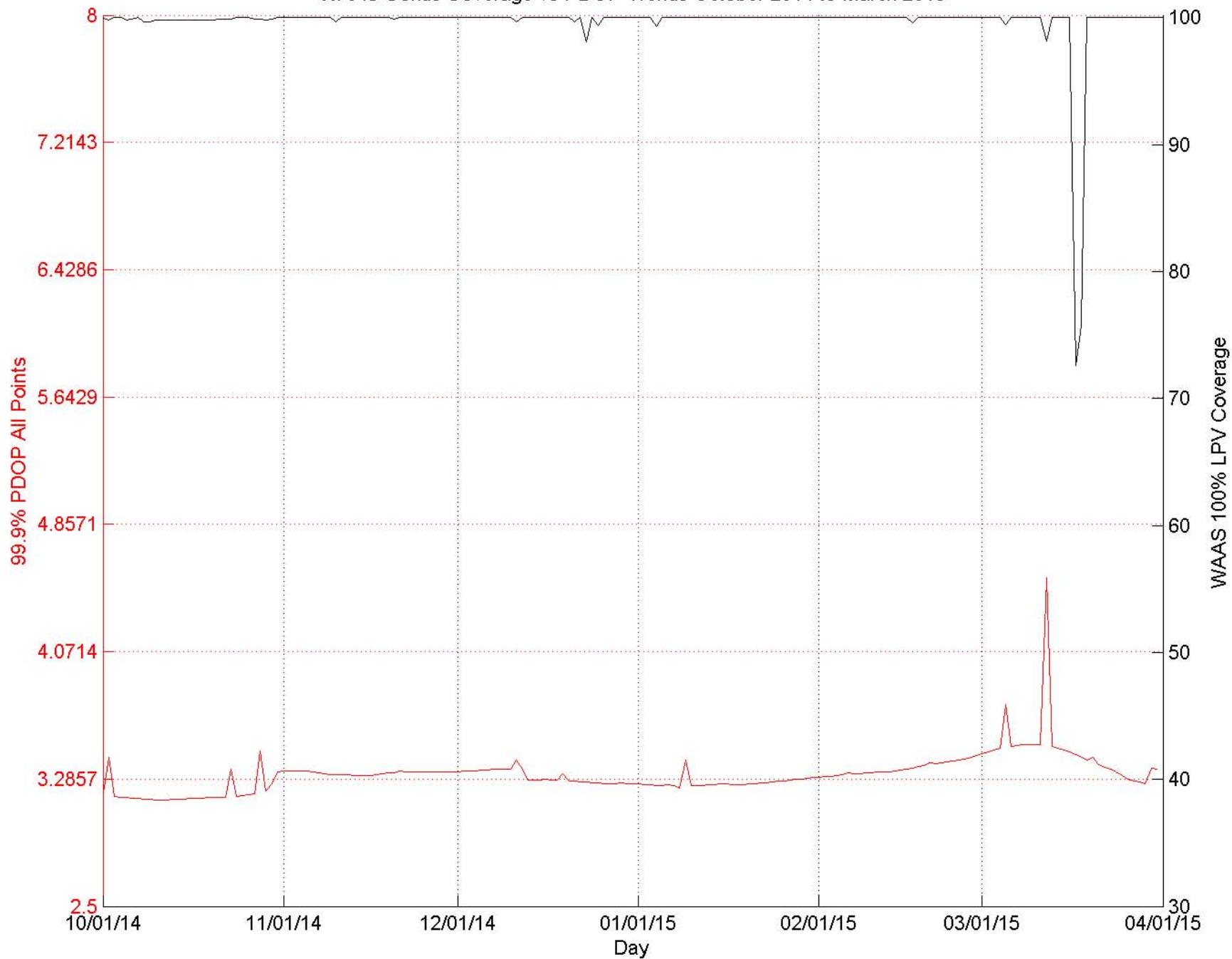
# GPS World PDOP 99.99% Index March 2015



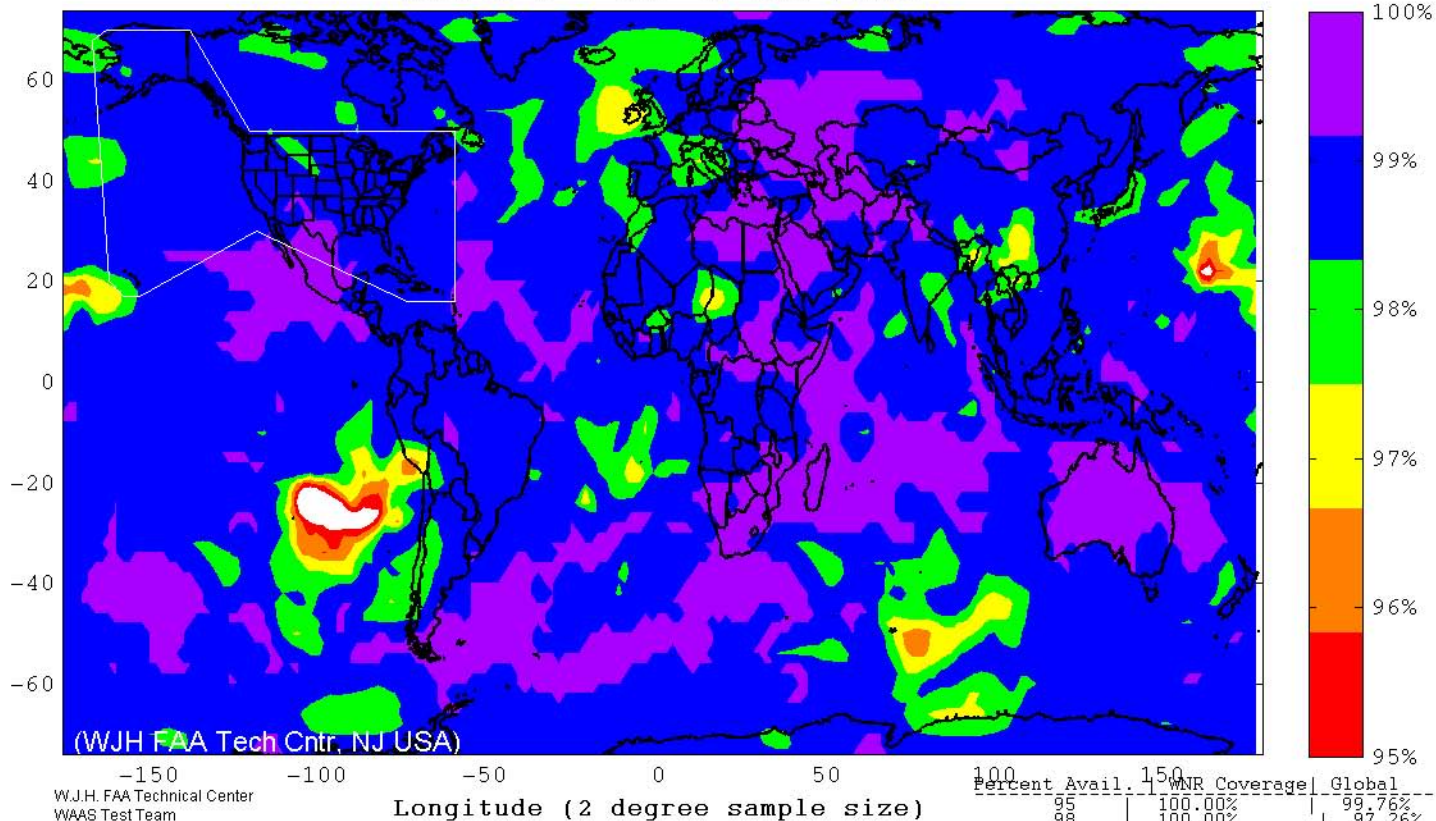
PDOP Trends October 2014 thru March 2015



WAAS Conus Coverage vs PDOP Trends October 2014 to March 2015



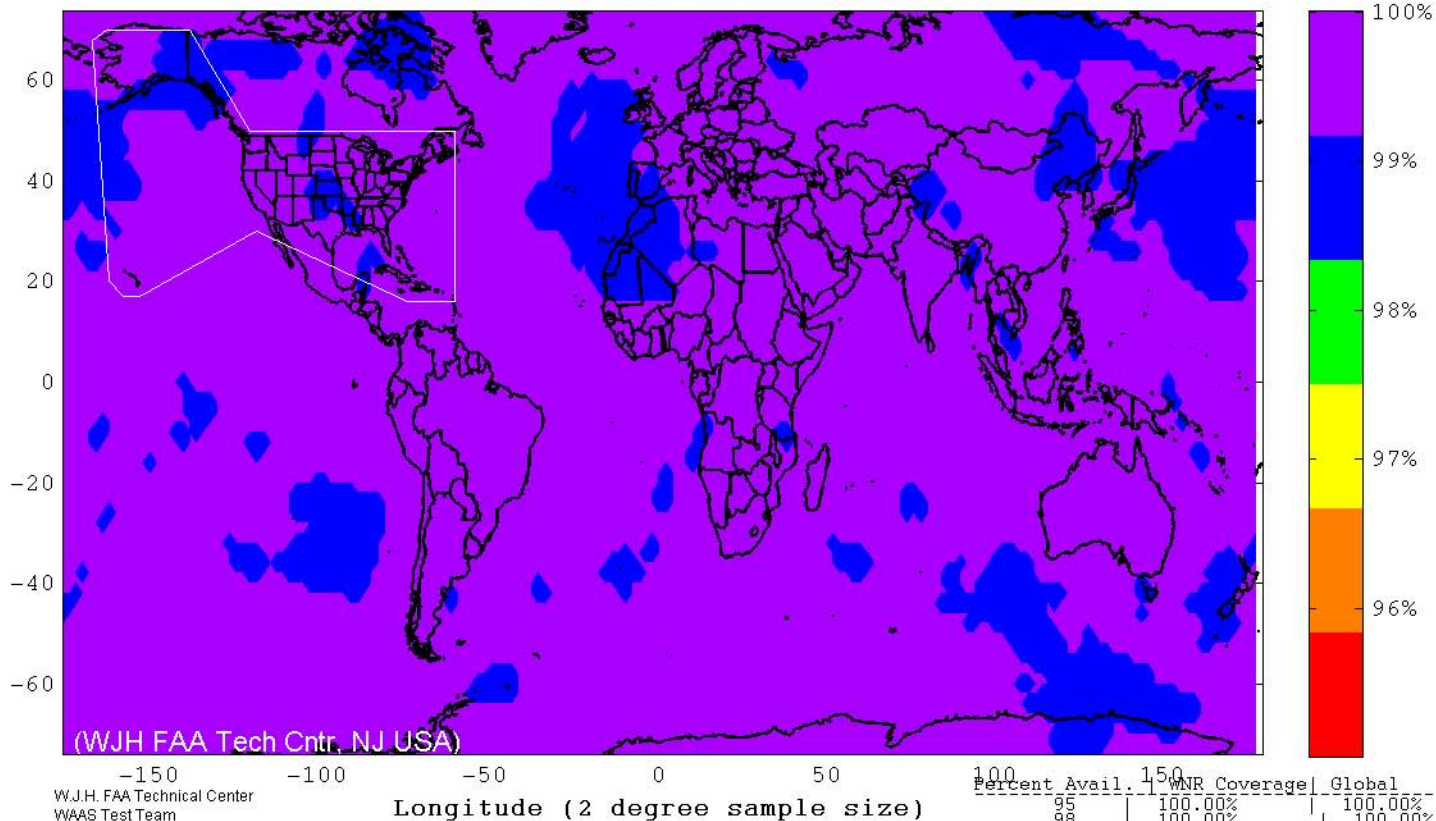
SPS RAIM RNP 0.1 (HAL = 185m) Availability  
 FD Only, SA Off, without Baro-Aiding  
 March 1 - March 31, 2015



W.J.H. FAA Technical Center  
 WAAS Test Team  
 04/13/15

Longitude (2 degree sample size)

SPS RAIM RNP 0.3 (HAL = 556m) Availability  
 FD Only, SA Off, without Baro-Aiding  
 March 1 - March 31, 2015



W.J.H. FAA Technical Center  
 WAAS Test Team  
 04/13/15

Longitude (2 degree sample size)