

SMS User Manual

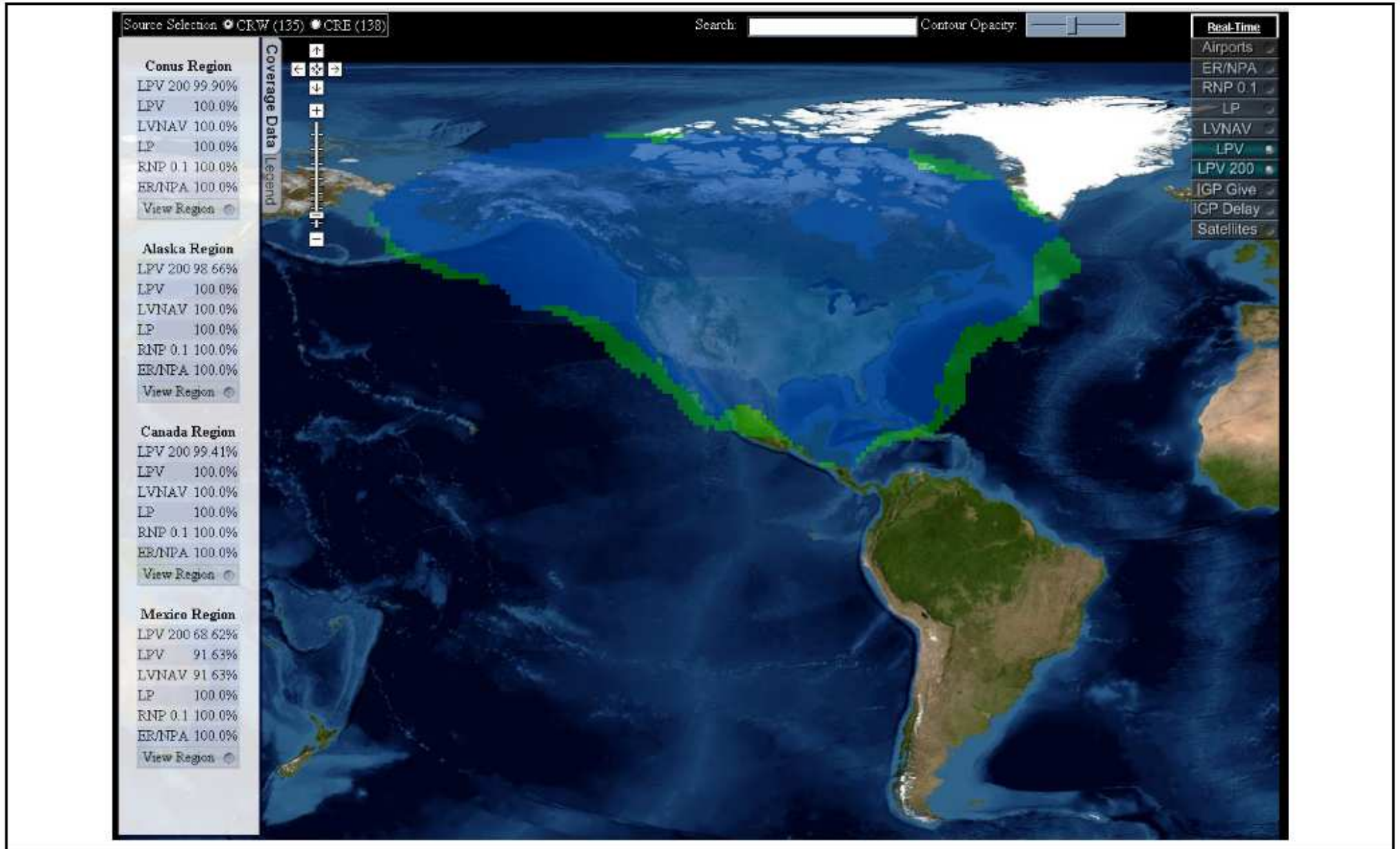


Table of Contents

<u>Section</u>	<u>Page #</u>
Top Toolbar Tools.....	3
Bottom Bar Labels.....	5
Sidebar.....	6
Airport Layer.....	7
Contour Layers.....	8
IGP Layers.....	9
Satellite Layer.....	10



Top Toolbar Tools

-Source Selection Tool-

Source Selection CRW (135) CRE (138)

-Click to see what source of data the map displays

-Airport Search Tool-

Search:

-Searches Airports by Airport Code or Airport Name

Search: AC

-As you type, suggested results will be displayed

-  Antrim County (ACB)
-HPL: 9.86 VPL: 13.93
-  Souther Field (ACJ)
-HPL: 8.97 VPL: 17.1
-  Nantucket Memorial (ACK)
-HPL: 10.81 VPL: 16.46
-  Allen Parish (ACP)
-HPL: 8.45 VPL: 18.97
-  Waseca Muni (ACQ)
-HPL: 11.57 VPL: 17.88
-  Arcata (ACV)
-HPL: 11.57 VPL: 17.51
-  Atlantic City International (ACY)
-HPL: 10.09 VPL: 15.81


-Clicking on a suggested Airport will zoom the map to the selected airport

-You may also use the arrow keys to navigate the suggestions and press enter to select the highlighted airport




Top Toolbar Tools

-Contour Opacity Slider-

Contour Opacity:  -Adjusts the opacity of the coverage contours

-Real Time Menu-

 -Click to expand a selection of real-time layers to display on the map

-Clicking a layer selection will toggle that layer on and off

-IGP Give & IGP Delay can not be displayed at the same time and will toggle accordingly if a user attempts to display both



Bottom Bar Labels

-Lat, Long-

Lat, Long: -26.89453, -123.22266

- Displays the current Lat/Long position of the mouse
- Increases with accuracy as the map zooms in further

-Current GMT Time-

16:01:09 GMT

- Displays the current GMT time

-Data Last Updated-

Data Last Updated: 16:00:43 GMT

- A timestamp to display when the data on the map has been last updated



Sidebar

-Coverage Data Sidebar-

Conus Region
LPV 200 100.0%
LPV 100.0%
LVNAV 100.0%
LP 100.0%
RNP 0.1 100.0%
ER/NPA 100.0%
Hide Region

Alaska Region
LPV 200 98.66%
LPV 100.0%
LVNAV 100.0%
LP 100.0%
RNP 0.1 100.0%
ER/NPA 100.0%
View Region

Coverage Data Legend

- Displays the percentage of a region covered by a particular service level.
- Clicking 'View Region' will display the region being used for these calculations on the map
- Clicking 'Hide Region' will hide the region outline

-Legend Sidebar-

LPV
LP
LVNAV
RNP 0.1
ER/NPA
Not Monitored

Page Data Legend

- Displays a series of legends explaining the color coded icons



Airport Layer



Hovering the mouse over an airport icon will display the airport's full name

Clicking an airport icon will display additional information in a popup bubble

More airports are displayed as the map zoom level increases

Hint: Looking for a particular airport? Trying using the Search Tool to locate it faster.



Contour Layers

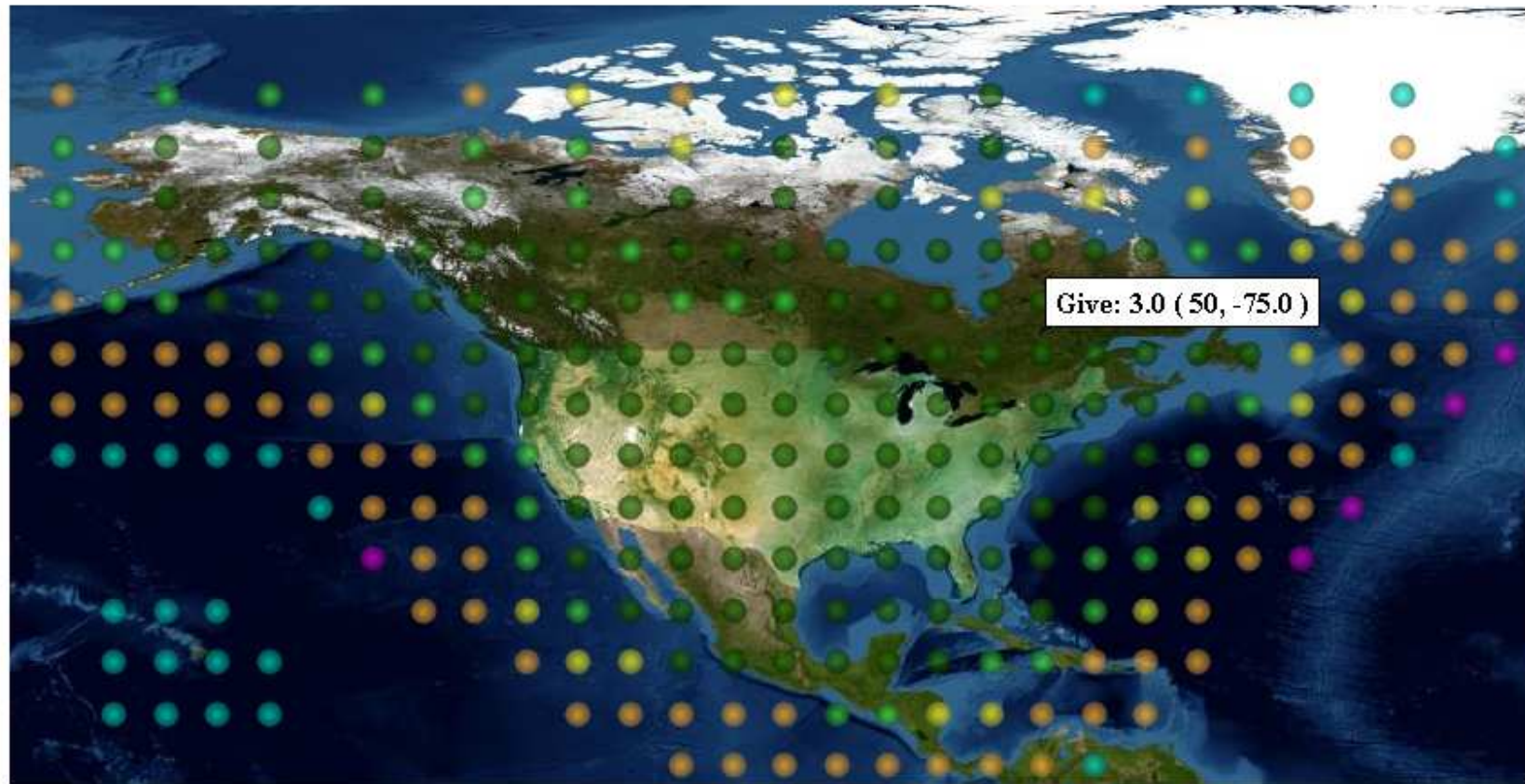


Each Contour Layer is toggled using the Real-Time Menu

Adjust the visibility of the contour by using the Contour Opacity Slider



IGP Layers

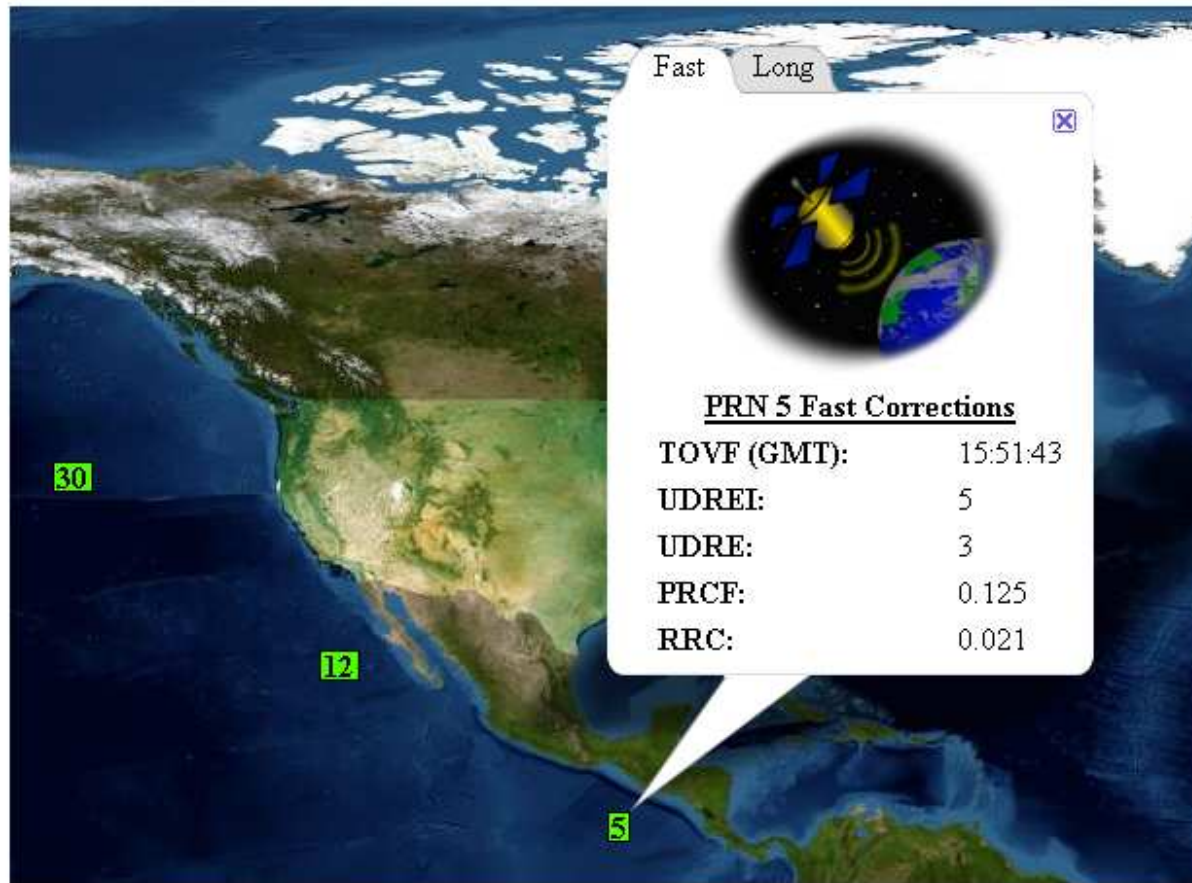


Hovering the mouse over an IGP Gridpoint will display the Give/Delay value and the Lat/Lng Position

IGP Give will also display the 'Count' value on the top toolbar



Satellite Layer



Hovering the mouse over a satellite icon displays the current source & mode

Clicking a satellite icon will display a popup bubble with two tabs:
One tab displays the fast corrections
The other tab displays long corrections